

JULEP  FARMS
Weddings



CELEBRATE YOUR LOVE STORY AT JULEP FARMS

Past the concrete and the crowds, just under two hours from downtown Atlanta and 11 miles from Highlands, lies Julep Farms—a haven where Southern hospitality and exceptional service take center stage. As soon as guests arrive, they are embraced by the stunning scenery and picturesque landscapes.

This pristine natural setting makes Julep Farms one of the most unique wedding venues in the South, providing an extraordinary backdrop for celebrating your special day with stunning surroundings and elegance. With sweeping views of the Blue Ridge Mountains, adorable miniature farm animals, and beautiful gardens, this venue truly offers a magical retreat.

The breathtaking surroundings, along with their seasonal charm, create a variety of distinctive options for hosting an unforgettable wedding ceremony and reception. Boasting state-of-the-art facilities, farm-fresh cuisine, beautifully appointed accommodations, and a dedicated staff committed to providing authentic Southern hospitality, Julep Farms ensures that your wedding day will be an unforgettable occasion.

Weddings & Receptions



The "Social House" offers an exquisite reception hall, making it the perfect venue for your dream wedding.

This remarkable space boasts impressive 28-foot ceilings, both indoor and outdoor stone fireplaces, and interconnected patio areas that provide stunning views of the Blue Ridge Mountains and the expansive landscape of Julep Farms. Furthermore, the venue grants private access to our formal gardens, as well as a bocce ball and croquet lawn, creating an ideal setting for an unforgettable wedding celebration.

DETAILS

Venue Fee Includes the following:

Access to the venue for a 2-hour engagement photo session prior to the wedding

Rehearsal location for 1.5 hours prior to the big day

Event space for both the wedding ceremony and reception

Setup and breakdown for the reception

Standard round (72-inch & 60-inch) banquet tables, 4 white wood rectangular tables, and 5 (30-inch) cocktail rounds, reception chairs

An expert team of wedding professionals to include servers, a banquet captain, and Wedding Services Manager (representing Julep Farms)

Wood cross-back banquet chairs for inside reception

Classic floor-length white linens for all round reception tables

Classic tableware, cutlery, and glassware

Menu planning with Julep Kitchen's chef

Five hours of private access to the Social House event rooms, formal gardens, and gaming areas.

Full access for set-up crews starting at 10 AM on the day of the event.



VENUE RATES

*Seating up to 185 guests (interior only- there is additional room with covered tent)

*Venue fee covers the ceremony (Silo location) and reception venue (Social House)

*Venue discount of \$500 if ceremony is held off campus

	LOW SEASON	STANDARD SEASON	HIGH SEASON
UP TO 200 GUEST COUNT	\$8,300	\$12,400	\$15,800

*LOW SEASON: JANUARY, FEBRUARY, MARCH, DECEMBER

*STANDARD SEASON: APRIL, AUGUST, SEPTEMBER, NOVEMBER

HIGH SEASON: MAY, JUNE, JULY, OCTOBER

(* ADDITIONAL DETAILS HERE FOR SOME DATES THAT ARE AN EXCEPTION)



STARTING FOOD & BEVERAGE

\$8,900

THERE IS A MINIMUM SPENDING ALLOWANCE OF \$86 PER PERSON,
WITH A TOTAL NOT FALLING BELOW \$8,900.

THIS AMOUNT DOES NOT INCLUDE TAXES AND GRATUITY.

The food and beverage minimum can be used towards passed hors d'oeuvres, plated/buffet dinners and specialized food stations, beer, wine and full bar.

See Beverage/ Bar Package for full details.

Pricing is subject to change at any time prior to booking.



JULEP  FARMS
Weddings

WEDDING SALES CONTRACT AND PAYMENTS

A non-refundable deposit equal to half of your venue fee in your signed sales contract will hold the dates, and event spaces. This non-refundable deposit will be applied to the total cost of the wedding festivities. The remaining balance is due 120 day prior to the wedding date. An additional deposit will be paid equal to 50% of the estimated cost for the food and beverage set forth in the Banquet Event

Orders (BEOs) the week after the bridal tasting no later than 60 days prior to the wedding. The remaining balance and final payment for the Food and Beverage is due 14 days prior to the wedding date. All remaining incidentals will be paid the morning you check out of your rooms. If there are any remaining balances on your food and beverage packages, they will be due no later than one week after your wedding.

BANQUET EVENT ORDERS (BEOS)

Once the final menu and estimated headcount is confirmed, the BEOs will be generated along with banquet checks totaling the food and beverage costs. The remaining balance of the food and beverage is due 14 days prior to the wedding weekend.

FINAL WALK-THROUGH AND PLANNING MEETING

The Final Walk-through and Planning Meeting will be scheduled two weeks before the wedding. All details of the festivities for the weekend will be discussed and the final payment due. Your event coordinator is required to be present at this meeting. All floor plans and room layouts of the event spaces must be finalized and approved at this time. Any changes from this date forth will incur an administrative fee of \$100. All outstanding or additional charges incurred with respect to the festivities will be billed and/or charged to the credit card on the master account within the following week of the wedding.

WEDDING PLANNER REQUIREMENT

A Wedding Planner (with a business license) will be required to assist with the wedding design/décor and planning details for your event. This includes the wedding itinerary, weekend timeline for the wedding party and guests, vendor selection/coordination and payments (florist, musicians, photographer/videographer, etc.), the program and flow for the rehearsal, rehearsal dinner, wedding ceremony, and wedding reception. The planner will coordinate the reception flow to include the announcement of the wedding party and newlywed couple, first dances, cutting of the cakes, any speeches, reception send-off, etc. A member of the wedding sales team will be on-site for your rehearsal, ceremony, and reception to ensure that everything is properly staged and executed by Julep Farms throughout the weekend of your wedding. This includes overseeing all Julep Farms operations; Guest Services, Food and Beverage, Banquet Staff, Housekeeping, and Grounds Crew.

LODGING AND ACCOMMODATIONS

Please note that July and October are the peak season for cottage stays at Julep Farms, so if you are looking for a wedding date to include overnight accommodations, you will want to book well in advance. Cottage stays (excluding one) are in addition to wedding pricing.









Overnight Accommodations

JULEP  FARMS





MAGNOLIA COTTAGE

SLEEPS 2

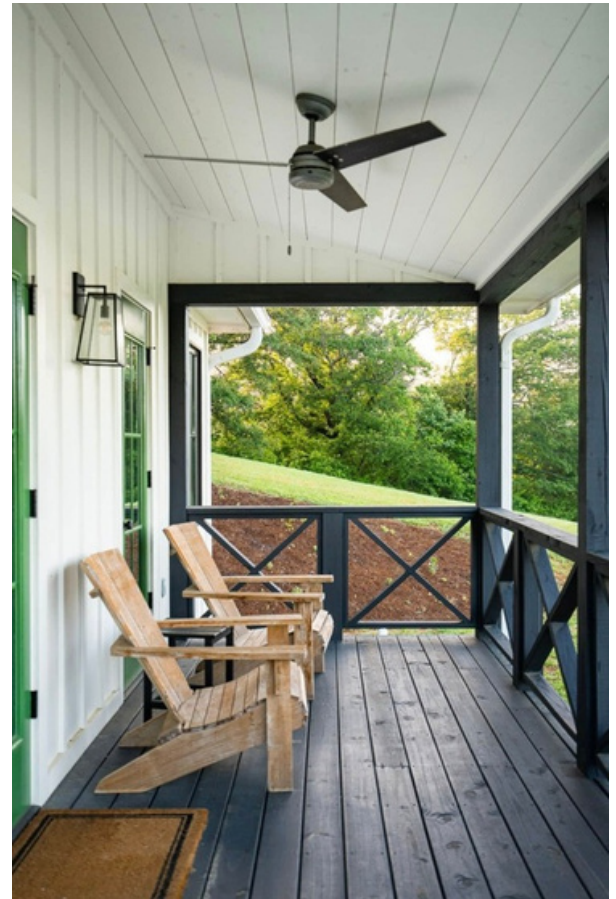
1 KING

1 ENSUITE BATHROOM

MINI KITCHEN WITH WET BAR
GREAT ROOM WITH DUAL SIDED

FIREPLACE

FRONT COVERED PORCH





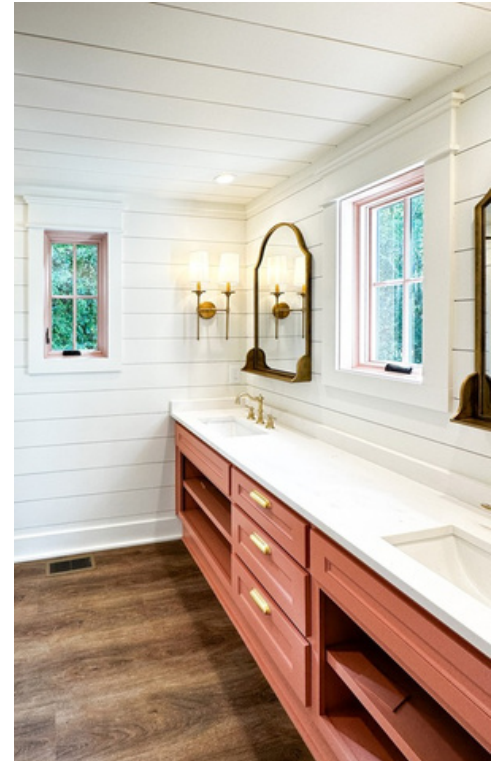
JANE COTTAGE

SLEEPS 6

1 KING

2 QUEENS

2 FULL ENSUITE BATHROOMS
MINI KITCHEN WITH WET BAR
GREAT ROOM WITH FIREPLACE
FRONT COVERED PORCH





SWEET TEA COTTAGE

SLEEPS 6

1 KING

2 QUEENS

2 FULL ENSUITE BATHROOMS

MINI KITCHEN WITH WET BAR

GREAT ROOM WITH FIREPLACE

BACK VAULTED COVERED PORCH





BOATHOUSE COTTAGE

SLEEPS 6

1 KING

2 QUEENS

2 FULL ENSUITE BATHROOMS
MINI KITCHEN WITH WET BAR
GREAT ROOM WITH FIREPLACE
FRONT COVERED PORCH





DERBY COTTAGE

SLEEPS 2

1 KING

FULL ENSUITE BATHROOMS

MINI KITCHEN WITH WET BAR

COZY FRONT PORCH





OTIS COTTAGE

SLEEPS 4

2 KINGS

2 FULL ENSUITE BATHROOMS

MINI KITCHEN WITH WET BAR

GREAT ROOM WITH FIREPLACE

FRONT PORCH



MAISON BLANCHE

COTTAGE

SLEEPS 6

1 KING

2 QUEENS

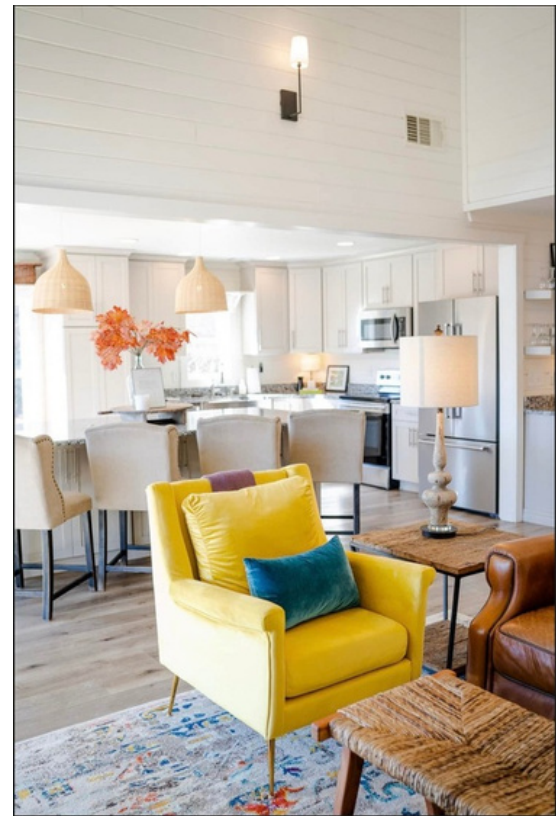
2 FULL BATHROOMS

FULL KITCHEN WITH WET BAR

GREAT ROOM WITH FIREPLACE

OUTDOOR FIREPLACE WITH AMAZING

VIEWS



HEMINGWAY COTTAGE

SLEEPS 6

1 KING

2 QUEENS

2 FULL ENSUITE BATHROOMS

MINI KITCHEN WITH WET BAR

GREAT ROOM WITH FIREPLACE

FRONT PORCH





FOR MORE INFORMATION PLEASE CONTACT US AT

(706) 960-9600 EXT.2 OR EXT. 3

EMAIL: EVENTS@JULEP.FARM

PHYSICAL LOCATION:

500 HWY 246, DILLARD, GA 30537

JULEP  FARMS
Weddings