

JULEP  FARMS  
*Weddings*



# CELEBRATE YOUR LOVE STORY AT JULEP FARMS

Past the concrete and the crowds, just under two hours from downtown Atlanta and 11 miles from Highlands, lies Julep Farms—a haven where Southern hospitality and exceptional service take center stage. As soon as guests arrive, they are embraced by the stunning scenery and picturesque landscapes.

This pristine natural setting makes Julep Farms one of the most unique wedding venues in the South, providing an extraordinary backdrop for celebrating your special day with stunning surroundings and elegance. With sweeping views of the Blue Ridge Mountains, adorable miniature farm animals, and beautiful gardens, this venue truly offers a magical retreat.

The breathtaking surroundings, along with their seasonal charm, create a variety of distinctive options for hosting an unforgettable wedding ceremony and reception. Boasting state-of-the-art facilities, farm-fresh cuisine, beautifully appointed accommodations, and a dedicated staff committed to providing authentic Southern hospitality, Julep Farms ensures that your wedding day will be an unforgettable occasion.

# *Weddings & Receptions*



The "Social House" offers an exquisite reception hall, making it the perfect venue for your dream wedding.

This remarkable space boasts impressive 28-foot ceilings, both indoor and outdoor stone fireplaces, and interconnected patio areas that provide stunning views of the Blue Ridge Mountains and the expansive landscape of Julep Farms. Furthermore, the venue grants private access to our formal gardens, as well as a bocce ball and croquet lawn, creating an ideal setting for an unforgettable wedding celebration.

# DETAILS

## Venue Fee Includes the following:

Access to the venue for a 2-hour engagement photo session prior to the wedding

Rehearsal location for 1.5 hours prior to the big day

Event space for both the wedding ceremony and reception  
(if exterior location is chosen, a tent fee would be added)

Use of one of our largest cottages  
(Sweet Tea Cottage\Boathouse Cottage\Jane Cottage),  
the night before the wedding, the day of the wedding and the evening of  
(a full 2 night stay)

All-day access on the day of the event for the full use of the  
Social House, restaurant, all patios, event space, formal gardens, gaming lawns,  
fire pits/fireplaces across the farm.

The host must reserve and book all cottages on the farm for a  
minimum of 2 nights per cottage.  
This will be a blocked reservation with guest access for individual booking.

Setup and break down for the reception.  
Standard rounds (72-inch & 60-inch) banquet tables, 4 white wood tables,  
and 5 (30-inch) cocktail rounds, reception chairs

An expert team of wedding professionals including servers, a banquet captain,  
and Wedding Services Manager (representing Julep Farms)

Wood cross-back banquet chairs for inside reception

Classic floor-length white linens for round tables at reception

Classic tableware, cutlery, and glassware

Menu planning with Julep Kitchen's chef

Full access for set-up crews starting at 10 AM on the day of the event.



# VENUE RATES

\*Seating up to 350 guests

Day of, full use of the restaurant, covered and uncovered patio space, and event space.  
The entire farm is no longer accessible to the public.

\*Venue fee covers the ceremony and reception venue (Social House).

	LOW SEASON	STANDARD SEASON	HIGH SEASON
UP TO 350 GUEST COUNT	\$16,500	\$24,500	\$28,800

\* LOW SEASON: JANUARY, FEBRUARY, MARCH, DECEMBER

\*STANDARD SEASON: APRIL, AUGUST, SEPTEMBER, NOVEMBER

HIGH SEASON: MAY, JUNE, JULY, OCTOBER

(\* ADDITIONAL DETAILS HERE FOR SOME DATES THAT ARE AN EXCEPTION)



## STARTING FOOD & BEVERAGE

**\$22,500**

(EXCLUSIVE OF TAXES AND GRATUITY)

The food and beverage minimum can be used towards passed hors d'oeuvres, plated/buffet dinners and specialized food stations, beer, wine and full bar.

See Beverage/ Bar Package for full details.

Minimum price per person is \$86

An Event Sample Menu is available upon request.

Pricing is subject to change at any time prior to booking.



JULEP  FARMS  
*Weddings*

# WEDDING SALES CONTRACT AND PAYMENTS

A non-refundable deposit equal to your full venue fee in your signed sales contract will hold the dates, and event spaces. This non-refundable deposit will be applied to the total cost of the wedding festivities. An additional deposit will be paid equal to 50% of the estimated cost for the food and beverage set forth in the Banquet Event Orders (BEOs) at the time of the bridal tasting no later than 45 days prior to the wedding. The remaining balance and final payment is due 14 days prior to the wedding weekend. All incidentals will be paid the morning you check out of your rooms. If there are any remaining balances on your food and beverage packages, they will be due no later than one week after your wedding.

## BANQUET EVENT ORDERS (BEOs)

Once the final menu and estimated headcount is confirmed, the BEOs will be generated along with banquet checks totaling the food and beverage costs. Half of the total payment is due at the signing of the BEO. The remaining balance is due 14 days prior to the wedding weekend.

## FINAL WALK-THROUGH AND PLANNING MEETING

The Final Walk-through and Planning Meeting will be scheduled two weeks before the wedding. All details of the festivities for the weekend will be discussed and the final payment due. All floor plans and room layouts of the event spaces must be finalized and approved at this time. Any changes from this date forth will incur an administrative fee of \$100. All outstanding or additional charges incurred with respect to the festivities will be billed and/or charged to the credit card on the master account within the following week of the wedding.

## WEDDING PLANNER REQUIREMENT

A Wedding Planner (with a business license) will be required to assist with the wedding design/décor and planning details for your event. This includes the wedding itinerary, weekend timeline for the wedding party and guests, vendor selection/coordination and payments (florist, musicians, photographer/videographer, etc.), the program and flow for the rehearsal, rehearsal dinner, wedding ceremony, and wedding reception. The planner will coordinate the reception flow to include the announcement of the wedding party and newlywed couple, first dances, cutting of the cakes, any speeches, reception send-off, etc. A member of the wedding sales team will be on-site for your rehearsal, ceremony, and reception to ensure that everything is properly staged and executed by Julep Farms throughout the weekend of your wedding. This includes overseeing all Julep Farms operations; Guest Services, Food and Beverage, Banquet Staff, Housekeeping, and Grounds Crew.

## LODGING AND ACCOMMODATIONS

Please note that July and October are the peak season for cottage stays at Julep Farms, so if you are looking for a wedding date to include overnight accommodations, you will want to book well in advance. Cottage stays (excluding one) are in addition to wedding pricing.









# Overnight Accommodations

JULEP  FARMS





# MAGNOLIA COTTAGE

SLEEPS 2

1 KING

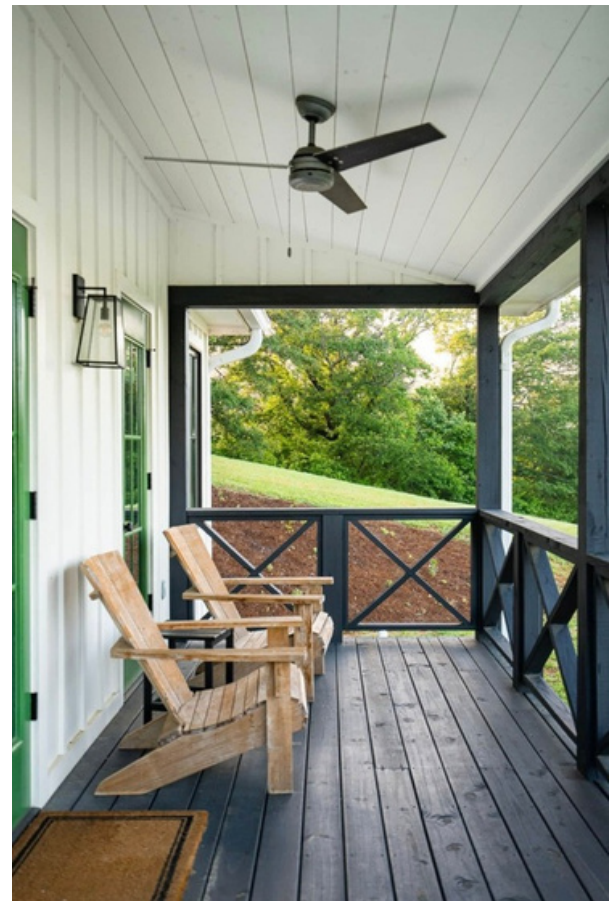
1 ENSUITE BATHROOM

MINI KITCHEN WITH WET BAR

GREAT ROOM WITH DUAL SIDED

FIREPLACE

FRONT COVERED PORCH





# JANE COTTAGE

SLEEPS 6

1 KING

2 QUEENS

2 FULL ENSUITE BATHROOMS  
MINI KITCHEN WITH WET BAR  
GREAT ROOM WITH FIREPLACE  
FRONT COVERED PORCH





# SWEET TEA COTTAGE

SLEEPS 6

1 KING

2 QUEENS

2 FULL ENSUITE BATHROOMS

MINI KITCHEN WITH WET BAR

GREAT ROOM WITH FIREPLACE

BACK VAULTED COVERED PORCH





# BOATHOUSE COTTAGE

SLEEPS 6

1 KING

2 QUEENS

2 FULL ENSUITE BATHROOMS  
MINI KITCHEN WITH WET BAR  
GREAT ROOM WITH FIREPLACE  
FRONT COVERED PORCH





# DERBY COTTAGE

SLEEPS 2

1 KING

FULL ENSUITE BATHROOMS

MINI KITCHEN WITH WET BAR

COZY FRONT PORCH





# OTIS COTTAGE

SLEEPS 4

2 KINGS

2 FULL ENSUITE BATHROOMS

MINI KITCHEN WITH WET BAR

GREAT ROOM WITH FIREPLACE

FRONT PORCH



# MAISON BLANCHE

## COTTAGE

SLEEPS 6

1 KING

2 QUEENS

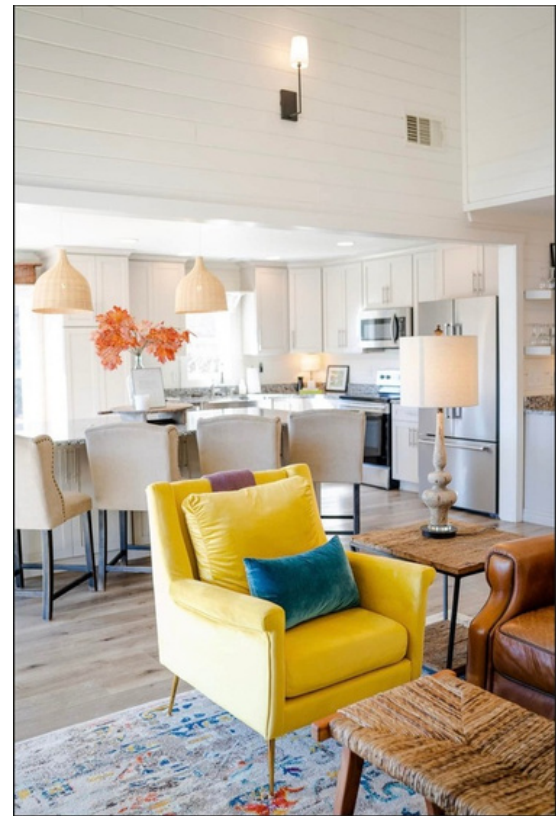
2 FULL BATHROOMS

FULL KITCHEN WITH WET BAR

GREAT ROOM WITH FIREPLACE

OUTDOOR FIREPLACE WITH AMAZING

VIEWS



# HEMINGWAY COTTAGE

SLEEPS 6

1 KING

2 QUEENS

2 FULL ENSUITE BATHROOMS

MINI KITCHEN WITH WET BAR

GREAT ROOM WITH FIREPLACE

FRONT PORCH





FOR MORE INFORMATION PLEASE CONTACT US AT

(706) 960-9600 EXT.2 OR EXT. 3

EMAIL: [EVENTS@JULEP.FARM](mailto:EVENTS@JULEP.FARM)

PHYSICAL LOCATION:

500 HWY 246, DILLARD, GA 30537

JULEP  FARMS  
*Weddings*